



Smart School Software

www.smartschoolsoftware.com



Why SSS?

During the course of a Educational Establishment working day, have you ever faced a situation where you have to:

- Get a quick overview of the strength of each class...
- juggle a class timetable
- access unit test papers and test scores within seconds
- view the fee collection status and the Accountant was on a lunch break
- Automatically generate a short text message to all the parents.....

If you answered yes to any of the questions, there's why you need this path breaking technology package.



SSS is the most efficient Windows-based Education Establishment Management software with the power to revolutionize the way that education institutions in run.

Seamless transition - The software product is customized and easily integrated into your existing back office systems.

It brings together all the stakeholders – Administrator, Front office Staff / Faculty, Student and Parent on to a single platform.

Modules



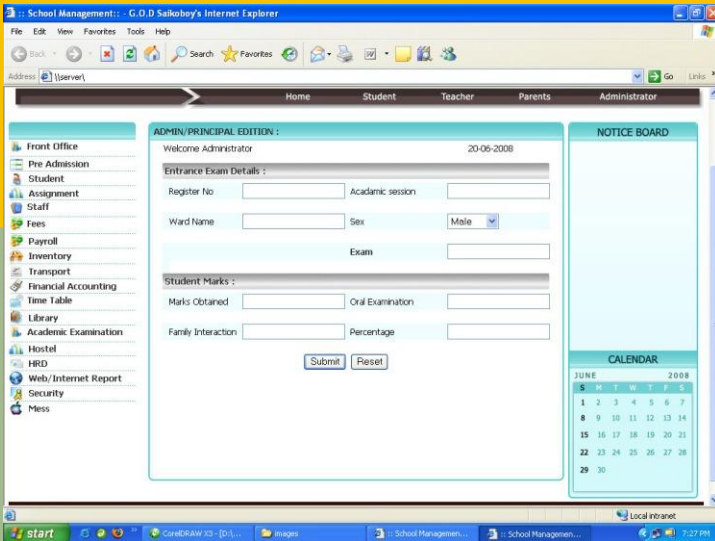
Administrator Module

Remote and direct control of all the key operations within your administrative system

Features of Administrator Module:

Pre- Admission Module – A time saving module that handles all the chaotic pre-admission procedures such as, Features of Administrator Module:

- Student Registration
- Pre-Admission Test
- Fee Details
- Administering Entrance Exams
- Report Generation of Above



Academic Examination Module

Administrator can effectively supervise all examination and test related functions including reviewing syllabus. This module deals with the scheduling of examinations, setting of test papers, reviewing results and generating report cards. Manages the Academic Procedure more transparently.

Library Module

The Library Module manages all data pertaining to library stocks and procedures including

- RECORD OF ISSUES & RETURN OF BO
- FINE COLLECTION
- RESERVATION OF BOOKS ONLINE
- MAINTAIN BOOK CATALOGUES
- REPORT GENERATION OF ABOVE

Modules

Hostel Module

The Hostel Module manages relating to room availability and allow facilities, housekeeping and cafeteria.

Major Features of Hostel Modules

- Handles all activities relate to hostel
- Reservation and allocation of rooms
- Maintaining visitors records
- Also generates various reports



Transport Module

This module is designed to ensure total control of transport facilities including. Keeps complete record of transport

Bus detail route wise & its timings

This module feature bus stop & route allocation to student/staff

Maintenance of vehicle log book

Vehicle expenses and vehicle requisition for various occasions

HR Module

The Human Resources Development Module deals with recruitment policy, data base management, generation of interview call letters and follow-ups as well as maintenance of HR records and requirements.

Inventory Module

This module takes charge of the all important task of maintaining a database of man and materials, recording purchases, stock maintenance and requisitions, generation of purchase orders, delivery memos, stock statements and computerized generation of routine reports.

Staff Module

This module maintains a database of your staff's personal details, including:

PERSONAL DETAILS

QUALIFICATION DETAILS

STAFF MEMBER

CURRENT STAFF

TRANSFERRED STAFF

RETIRED STAFF

Modules

Fee Module >

This module deals with all fee related data that includes:

- Manages complete fee record
- Maintain registers of fee receipts and outstanding amounts on a student/class basis
- The fee module has a feature for fine maintenance and its calculation there by
- The module offers various reports for fees and its related information

Payroll Module >

This module deals with the crucial database management of staff remuneration including:

Generate Necessary Pay Slip

- Designed for handling of payment for employees/staff
- Provides generation of pay slip, provident fund statements, and other facilities
- Various types of reports are available to represent the information gather

Student Module >

- This module has an exhaustive database of the student's details including Complete Student Record
- Stores all personal, academic, professional and history data regarding a student
- His/her parents details
- Generate reports for current student, dropouts, transferred and alumni students

Time-Table Module >

This module manages data involving time-table scheduling in sync with class composition and strength, subject information, individual teacher schedules as well as generates class and teacher Time Tables.

Solution of every complex time table.

Simplify the most time taking task of generating the time table.

This module has the feature of dynamically generating class/teacher timetables and provisions for a teacher substitution list for absent teacher

A list of teachers teaching a particular subject for a class / all classes and a list of all class teachers

The information is presented in various report format

Modules Teacher Module

One of the key stakeholders is the Teacher and the **FIN Infocom - SSS** gives the teacher a new media of interaction with the Student. SSS simplifies laborious and routine functions by automating pertinent data collection, generation and management.

- [Profile >](#) The Teacher can view his/her profile
- [Attendance >](#) The module enables the Teacher to view status of attendance as well as generate attendance reports for Students
- [Time Table >](#) A unique media that allows you to view and edit the class timetable and disseminate the information to the stakeholders in Real time
- [Library >](#) Teacher can search the database and reserve a book online
- [Leave Status >](#) Teacher can view Leave status as well as submit leave requests online
- [Salary >](#) Teacher can view his/her salary details
- [Mail >](#) Teacher can mail to Principal, Vice-Principal and Head Master
- [Assignment >](#) Teacher can submit assignments and review completed assignments by students
- [Exam Schedule >](#) Teacher can upload and view Examination Schedules
- [Progress Report >](#) The cumbersome process of recording marks in ledgers is done away with. With the use of navigational aids such as graphical icons, the Teacher can easily update and generate Progress Reports
- [Search Student >](#) Teacher can view relevant Student details
- [Feedback >](#) The Teacher now has a timesaving media for constantly updating Parents and students as well as sending mail or receiving feedback from other key stakeholders
- [Leave Application >](#) The Teacher can Submit Leave Application to the Administrator online



Modules Parent Module

With the hectic lifestyle of Today, it is often impossible for parents to personally visit and interact with your teachers. **SSS** enables Parents to keep track of their ward's progress from the comfort of their home or office.

- Parents can view his/her child's assignments
- [E-zines](#) > Educates parents on various topics and issues pertaining to education and parenting
- [Feedback](#) > Parents can send and receive messages from the school administration
- [Leave Application](#) > Parents can Submit Leave Requests online on behalf of their wards
- [Fee Payment](#) > Parents can view Fee structure and payment schedules online
- [Hostel](#) > Parents can view hostel details in terms of facilities and room availability and booking
- [Transport facilities](#) > Parents can access valuable information regarding bus routes, tariff and bus timings
- [Extra Curricular](#) > Parents can keep track of their child's extra curricular activities such as Sports, Music, Drama etc...
- [Scholarships](#) > Parents have access to information regarding scholarship eligibility and criteria

Modules Student Module

We live in the Information Age where computers have become reigour in educational institution, with more than 90% of students being computer savvy.



- [Profile >](#) The Student can view his/her profile, attendance record, check examination schedules, see test scores and access subject syllabus
- [Homework and Assignments >](#) Using SSS, Students have a new platform to increase their knowledge base as well as receive and submit assignments
- [Leave application >](#) The student can submit leave applications online
- [Feedback >](#) Students can keep channels of communication open with the administrator and teaching faculty and can give and receive feedback
- [Transport >](#) Students can access details regarding bus routes, bus timings and bus fares
- [Hostel >](#) Students can get online information about hostel details such as room availability and booking, mess details and other facilities offered
- [Co- curricular activities >](#) Students have access to details regarding school events and co-curricular activities
- [Progress Reports >](#) Students can access their performance scores and print Progress Reports
- [Library >](#) Students can access Library records for availability of books as well as reserve a book online
- [Fee structure & Scholarships >](#) Students can view fee structure and payment schedules as well as information on scholarships and grants

Benefits

Key Benefits of implementing SSS



Being the Principal / Administrator/ Headmaster of a reputed educational institution such as yours requires you to effectively manage the several departments of the educational Information system.



Financial Gain with SSS

Enables you to cut down on human resource requirement by a whopping 90%, which directly translates into a huge saving on salaries, PF, stock and other infra structural requirements.

A great PR exercise for your Educational Management

Get Noticed with SSS >

Being amongst the first to use this path breaking technology will enhance your Educational Management's image and reputation within the community with parents who are looking for a better educational management for their ward and with better qualified teachers looking for a challenging environment

One Window Online > Database Management

Mountain loads of data generated by the different departments are easily automated, analyzed, processed, accessed and managed

Three dimensional > interface

One Window Information sharing with authorized users and stakeholders in Real time

Easily configurable Multi -user system

Administrator has direct control of all key operations within the administrative system

Time-saving device – In a world where Time is Money, Time-consuming tasks are computerized and simplified, saving on valuable time, money and resources

Effortless MIS Reports Generation and management

Benefits

Product Highlights >



Globalised Design

Attractive page format and styling

Highly user friendly, employing navigational aids such as graphical icons, Numeric pad access technology for easy navigation and operation

Web-cam photo capturing

Timely and convenient After Sales Service

Implementation Choices:

Web based >

An online script that generates, processes and manages data in Real time

Server & Client Architecture >

Depending on the size of the educational establishment, the server provides scalability for a growing subscriber base

Standalone >

A unique feature for a limited set of users and subscribers

Licensing Methods:

Purchase of Licenses >

100% buying – Single time activation with paid upgrades

Lease of Software >

A cost effective method for the end-user that allows for monthly subscription (with provision of activation keys) which factors in periodic upgrades in technology

Conclusion

Technology

Front End: PHP

Back End Database: MySQL

SSS software for Web based



Conclusions

SSS provides a single platform for the administrator, teacher and student who want real time information, eg., class schedules, attendance and performance reports with the click of a few keys.

It is the only application that has an interactive synchronization of data with online and offline versions. With the use of this software, all school data is easily accessible on your web site and is secure, up to date and personalized.

Simplifying your enterprise & Harnessing your Strengths!



Contact Us

Contact our
sales team at



India Office

Fin Infocom
101, Sai Sampada Plaza,
Habsiguda, Hyderabad-500007
Andhra Pradesh - INDIA

Ph: +91(0)40-64611135
Fax: +91(0)40-27173290

Email: contact@smartschoolsoftware.com

Corporate Office (UK)

Fin Infocom
8-10, Gough House
57 Eden Street
Kingston upon Thames-KTI IDA
Surrey, UNITED KINGDOM

If you are calling from Overseas Please Dial +44(0)2033847551

Email: contact@smartschoolsoftware.com

